

# TECHNICAL DATA SHEET

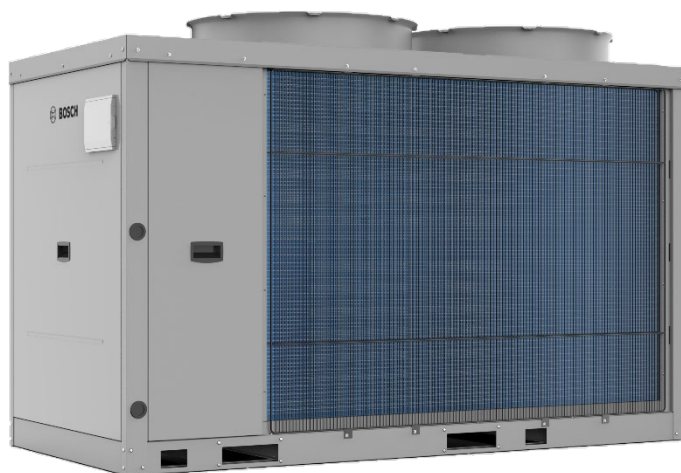
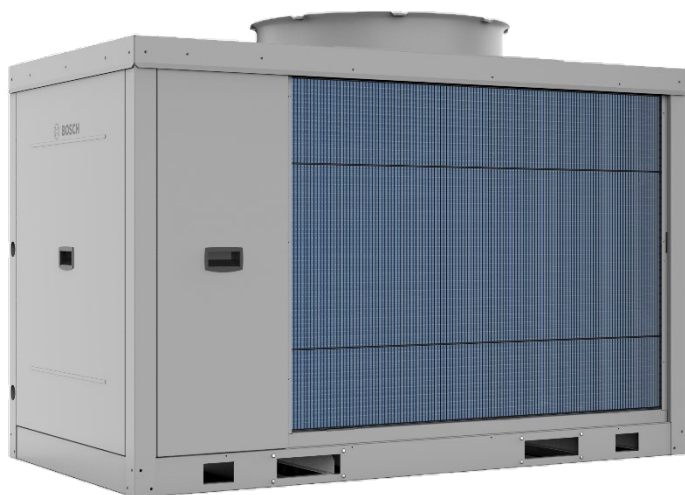
TECHNICAL DATA SHEET COM115 (02/2023)



# BOSCH

Invented for life

## PRODUCT: Compress 3000 AWP Commercial heat pump – Chassis 1 & 2



- Individual outputs ranging from 16 kW to 41 kW (**A-7/W35**)
- Model variants include, with pump, buffer, 3-way DHW valve and anti-corrosion coating.
- Up to 16 units can be cascaded to provide an output of up to 2MW (**A7/W35**)
- R32 Refrigerant with a GWP of 675
- Inverter driven compressors
- Fully reversible allowing for heating and cooling
- Modbus RTU interface as standard
- Volt-free run signal or 0-10V/4-20mA temperature setpoint
- Three selectable noise modes, **Normal**, **Silent**, **Super silent**, and **Night**.

Whilst it is always our intention to fully assist, it is essential to recognise that all information given by the company in response to an enquiry of any nature is provided in good faith and based upon the information provided with the enquiry. We recommend that advice should always be checked with your installer or contract partner. Consequently, the company cannot be held responsible for any liability relating to the use or repetition of such information or part thereof. In addition, whilst making every reasonable effort to monitor the performance and quality of our supply, installation, and service network, we do not accept responsibility for the workmanship or operation of any third-party company that the company may have promoted either in conversation, e-mail, or other communication. Similarly, the views and opinions expressed in communication with individuals within the company may not reflect that of the business as a whole. You can find this, and additional information on the Bosch commercial website at: [www.bosch-thermotechnology.com/gb/en/commercial-industrial/home](http://www.bosch-thermotechnology.com/gb/en/commercial-industrial/home)

# TECHNICAL DATA SHEET

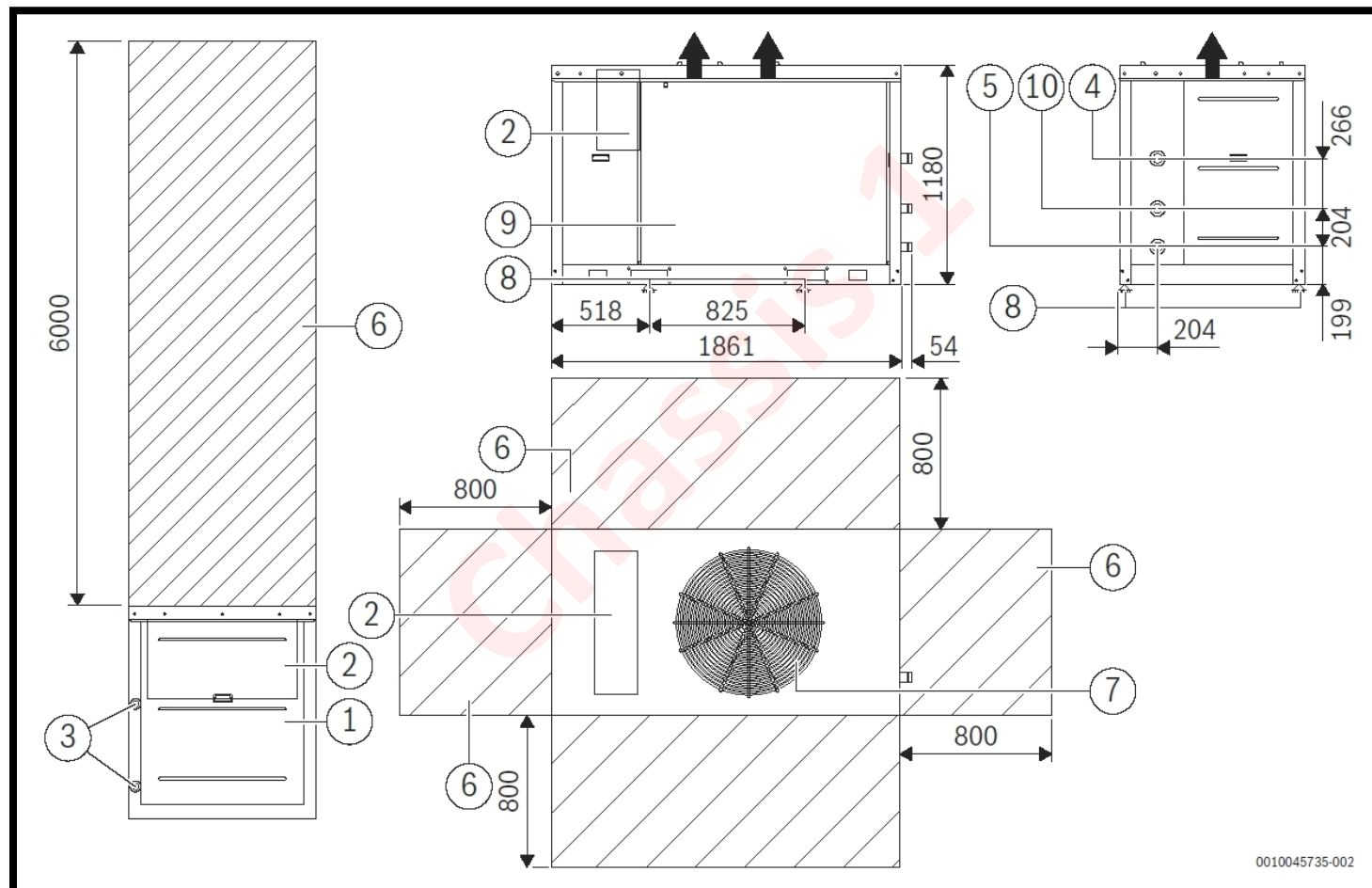
TECHNICAL DATA SHEET COM115 (02/2023)



**BOSCH**

Invented for life

## Dimensions and clearances – Chassis 1



0010045735-002

1. Compressor compartment
2. Electrical panel
3. Power input
4. Inlet water connection 1" ½ Victaulic
5. Outlet water connection 1" ½ Victaulic
6. Clearance area
7. Brushless electric fan
8. Unit fixing holes
9. External exchanger / Evaporator
10. Domestic hot water outlet (with specific models) 1" ½ Victaulic

Whilst it is always our intention to fully assist, it is essential to recognise that all information given by the company in response to an enquiry of any nature is provided in good faith and based upon the information provided with the enquiry. We recommend that advice should always be checked with your installer or contract partner. Consequently, the company cannot be held responsible for any liability relating to the use or repetition of such information or part thereof. In addition, whilst making every reasonable effort to monitor the performance and quality of our supply, installation, and service network, we do not accept responsibility for the workmanship or operation of any third-party company that the company may have promoted either in conversation, e-mail, or other communication. Similarly, the views and opinions expressed in communication with individuals within the company may not reflect that of the business as a whole. You can find this, and additional information on the Bosch commercial website at: [www.bosch-thermotechnology.com/gb/en/commercial-industrial/home](http://www.bosch-thermotechnology.com/gb/en/commercial-industrial/home)

# TECHNICAL DATA SHEET

TECHNICAL DATA SHEET COM115 (02/2023)



**BOSCH**

Invented for life

## Technical data

### ➤ Chassis 1: Heating and Cooling information

| Description  | Unit | Product Models |              |              |
|--|------|----------------|--------------|--------------|
|  |      | CS3000AWP 16   | CS3000AWP 19 | CS3000AWP 24 |
| Heating Data   |      |                |              |              |
| Max output at A10/W35                                | kW   | 29.68          | 33.69        | 38.90        |
| COP at A10/W35                                       | -    | 4.69           | 4.53         | 4.51         |
| Max output at A7/W35                                 | kW   | 25.38          | 30.00        | 35.78        |
| COP at A7/W35  | -    | 4.40           | 4.20         | 4.10         |
| Max output at A2/W35                                 | kW   | 22.49          | 25.22        | 30.85        |
| COP at A2/W35  | -    | 3.62           | 3.35         | 3.18         |
| Max output at A-7/W35                                | kW   | 15.40          | 18.81        | 23.07        |
| COP at A-7/W35                                       | -    | 2.85           | 2.76         | 2.71         |
| Max output at A-10/W35                               | kW   | 14.95          | 18.65        | 21.67        |
| COP at A-10/W35                                      | -    | 2.64           | 2.59         | 2.53         |
| Max output at A7/W55                                 | kW   | 22.94          | 27.56        | 32.48        |
| COP at A7/W55  | -    | 2.59           | 2.45         | 2.37         |
| Max output at A2/W55                                 | kW   | 21.30          | 20.43        | 29.20        |
| COP at A2/W55  | -    | 2.37           | 1.94         | 2.12         |
| SCOP (A7/W35)  | -    | 4.41           | 4.36         | 4.31         |
| SCOP (A7/W55)  | -    | 3.24           | 3.22         | 3.18         |
| η <sub>sh</sub> at W35 (%) av. Climate <sup>1)</sup> | -    | 173%           | 172%         | 169%         |
| η <sub>sh</sub> at W55 (%) av. Climate <sup>1)</sup> | -    | 127%           | 126%         | 124%         |
| Max flow temperature                                 | °C   | 60°C (at A -4) |              |              |
| Max flow temperature at A -20                        | °C   | 45°C           |              |              |
| Operating outdoor temperature limits                 | °C   | -20°C          |              |              |
| Space heating efficiency class HT                    | -    | A++            | A++          | A+           |
| Energy efficiency class HP LT                        | -    | A++            | A++          | A++          |
| Cooling Data   |      |                |              |              |
| Max output at A35/W18                                | kW   | 33.20          | 37.10        | 41.90        |
| EER at A35/W18                                       | -    | 3.88           | 3.65         | 3.32         |
| Max output at A35/W7                                 | kW   | 23.29          | 25.80        | 29.30        |
| EER at A35/W7  | -    | 3.11           | 2.84         | 2.78         |
| Outdoor temperature operating range                  | °C   | Up to 48°C     |              |              |
| Minimum supply temperature                           | °C   | 0°C            |              |              |

<sup>1)</sup> Seasonal space heating energy efficiency.

Whilst it is always our intention to fully assist, it is essential to recognise that all information given by the company in response to an enquiry of any nature is provided in good faith and based upon the information provided with the enquiry. We recommend that advice should always be checked with your installer or contract partner. Consequently, the company cannot be held responsible for any liability relating to the use or repetition of such information or part thereof. In addition, whilst making every reasonable effort to monitor the performance and quality of our supply, installation, and service network, we do not accept responsibility for the workmanship or operation of any third-party company that the company may have promoted either in conversation, e-mail, or other communication. Similarly, the views and opinions expressed in communication with individuals within the company may not reflect that of the business as a whole. You can find this, and additional information on the Bosch commercial website at: [www.bosch-thermotechnology.com/gb/en/commercial-industrial/home](http://www.bosch-thermotechnology.com/gb/en/commercial-industrial/home)

# TECHNICAL DATA SHEET

TECHNICAL DATA SHEET COM115 (02/2023)



# BOSCH

Invented for life

## ➤ Chassis 1: Other information

| Description   | Unit | Product Models  |              |              |
|---|------|-----------------|--------------|--------------|
|   |      | CS3000AWP 16    | CS3000AWP 19 | CS3000AWP 24 |
| Refrigeration circuit                                     |      |                 |              |              |
| Compressor type   | -    | Rotary Inverter |              |              |
| No. of compressors/circuits                               | -    | 1/1             |              |              |
| Refrigerant type  | -    | R32             |              |              |
| Refrigerant charge  | kg   | 7.9             |              |              |
| CO <sub>2</sub> Equivalent                                | t    | 5.33            |              |              |
| Max. Operating pressure                                   | bar  | 42              |              |              |
| Min. Operating pressure                                   | bar  | 1.4             |              |              |
| Sound output <sup>2)</sup>                                |      |                 |              |              |
| Standard mode (Power/Pressure)                            | dB   | 75 / 59         | 78 / 62      |              |
| Silent mode (Power/Pressure)                              | dB   | 72 / 56         | 77 / 61      |              |
| Super silent mode (Power/Pressure)                        | dB   | 70 / 54         | 75 / 59      |              |
| Electrical supply   |      |                 |              |              |
| Power supply  | -    | 400V/3~/50hz+N  |              |              |
| Maximum current   | A    | 20              |              |              |
| Startup current   | A    | 10              |              |              |
| Recommended Auto circuit breaker                          | A    | 25              |              |              |
| Performance factor cos ϕ with max output                  | -    | 0.94            |              |              |
| System Information  |      |                 |              |              |
| Flow and Return Connection type                           | -    | Viciaulic       |              |              |
| Flow and Return Connection size                           | Inch | 1" ½            |              |              |
| Min. Flow rate  | l/s  | 0.9             |              |              |
| Max. Flow rate  | l/s  | 2.6             |              |              |
| Max. Operating water pressure                             | bar  | 6               |              |              |
| Min. System volume for defrost                            | l    | 200             |              |              |
| Min. / Max. Water operating temperature (Cooling/Heating) | °C   | 0°C/60°C        |              |              |
| Product information                                       |      |                 |              |              |
| Width   | mm   | 1005            |              |              |
| Depth   | mm   | 1920            |              |              |
| Height  | mm   | 1340            |              |              |
| Weight  | kg   | 309             |              |              |
| IP Rating   | -    | IP45            |              |              |

## <sup>2)</sup> Sound pressure level measured 1 meter from the outer surface of the unit operating in open field.

Whilst it is always our intention to fully assist, it is essential to recognise that all information given by the company in response to an enquiry of any nature is provided in good faith and based upon the information provided with the enquiry. We recommend that advice should always be checked with your installer or contract partner. Consequently, the company cannot be held responsible for any liability relating to the use or repetition of such information or part thereof. In addition, whilst making every reasonable effort to monitor the performance and quality of our supply, installation, and service network, we do not accept responsibility for the workmanship or operation of any third-party company that the company may have promoted either in conversation, e-mail, or other communication. Similarly, the views and opinions expressed in communication with individuals within the company may not reflect that of the business as a whole. You can find this, and additional information on the Bosch commercial website at: [www.bosch-thermotechnology.com/gb/en/commercial-industrial/home](http://www.bosch-thermotechnology.com/gb/en/commercial-industrial/home)

# TECHNICAL DATA SHEET

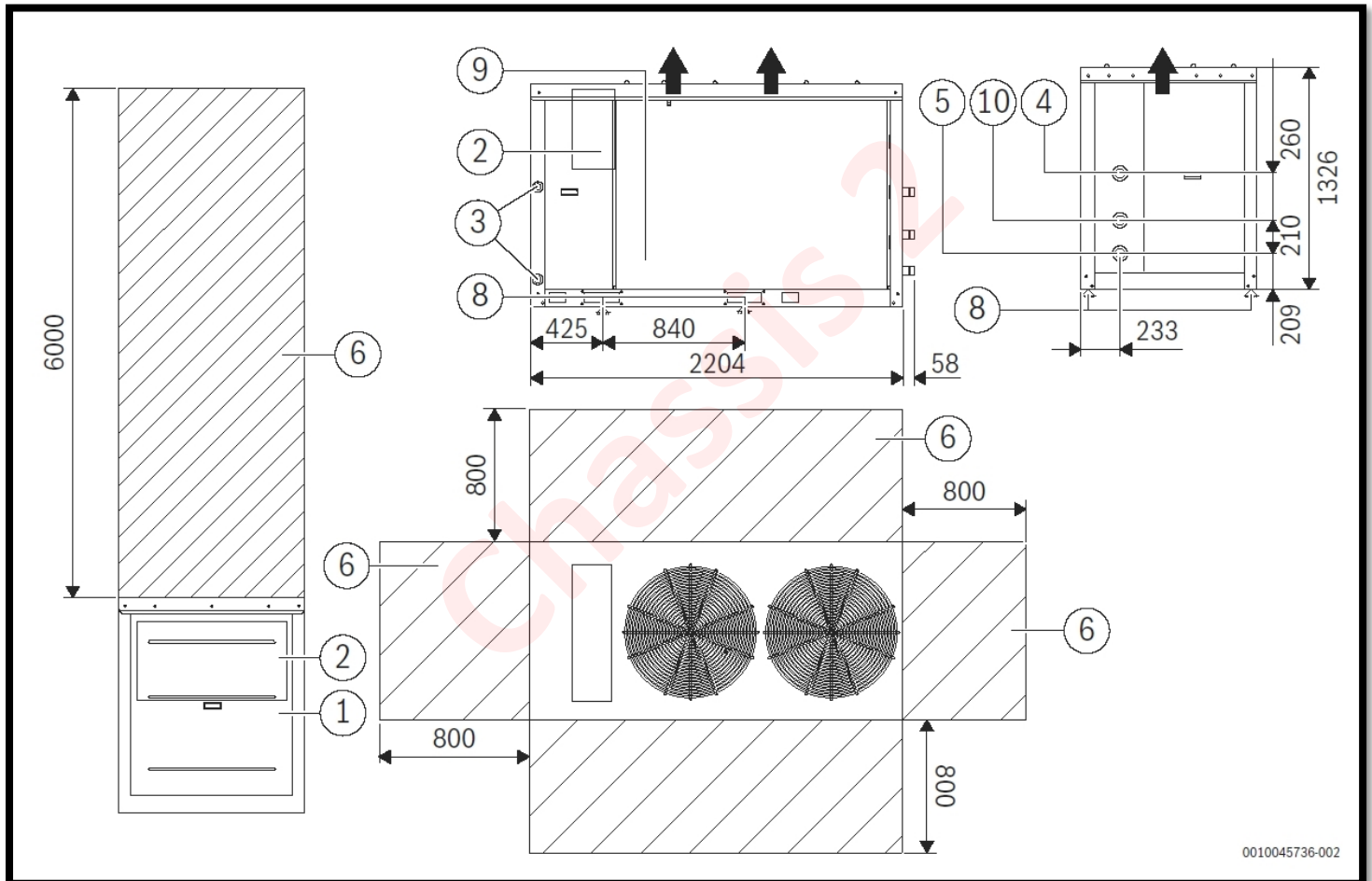
TECHNICAL DATA SHEET COM115 (02/2023)



**BOSCH**

Invented for life

## Dimensions and clearances – Chassis 2



0010045736-002

1. Compressor compartment
2. Electrical panel
3. Power input
4. Inlet water connection 2" Victaulic
5. Outlet water connection 2" Victaulic
6. Clearance area
7. Brushless electric fan
8. Unit fixing holes
9. External exchanger / Evaporator
10. Domestic hot water outlet (with specific models) 2" Victaulic

Whilst it is always our intention to fully assist, it is essential to recognise that all information given by the company in response to an enquiry of any nature is provided in good faith and based upon the information provided with the enquiry. We recommend that advice should always be checked with your installer or contract partner. Consequently, the company cannot be held responsible for any liability relating to the use or repetition of such information or part thereof. In addition, whilst making every reasonable effort to monitor the performance and quality of our supply, installation, and service network, we do not accept responsibility for the workmanship or operation of any third-party company that the company may have promoted either in conversation, e-mail, or other communication. Similarly, the views and opinions expressed in communication with individuals within the company may not reflect that of the business as a whole. You can find this, and additional information on the Bosch commercial website at: [www.bosch-thermotechnology.com/gb/en/commercial-industrial/home](http://www.bosch-thermotechnology.com/gb/en/commercial-industrial/home)

# TECHNICAL DATA SHEET

TECHNICAL DATA SHEET COM115 (02/2023)



**BOSCH**

Invented for life

## Technical data

### ➤ Chassis 2: Heating and Cooling information

| Description  | Unit | Product Models |              |              |
|--|------|----------------|--------------|--------------|
|  |      | CS3000AWP 31   | CS3000AWP 36 | CS3000AWP 41 |
| Heating Data   |      |                |              |              |
| Max output at A10/W35                                | kW   | 57.88          | 61.86        | 66.11        |
| COP at A10/W35                                       | -    | 4.61           | 4.39         | 4.31         |
| Max output at A7/W35                                 | kW   | 49.95          | 54.15        | 62.20        |
| COP at A7/W35  | -    | 4.41           | 4.22         | 4.03         |
| Max output at A2/W35                                 | kW   | 39.72          | 46.80        | 52.10        |
| COP at A2/W35  | -    | 3.45           | 3.43         | 3.36         |
| Max output at A-7/W35                                | kW   | 29.40          | 33.70        | 39.8         |
| COP at A-7/W35                                       | -    | 2.86           | 2.85         | 2.73         |
| Max output at A-10/W35                               | kW   | 28.65          | 32.22        | 35.92        |
| COP at A-10/W35                                      | -    | 2.68           | 2.69         | 2.59         |
| Max output at A7/W55                                 | kW   | 46.43          | 51.84        | 56.54        |
| COP at A7/W55  | -    | 2.72           | 2.69         | 2.73         |
| Max output at A2/W55                                 | kW   | 37.58          | 40.80        | 43.38        |
| COP at A2/W55  | -    | 2.11           | 2.08         | 2.05         |
| SCOP (A7/W35)  | -    | 4.33           | 4.33         | 4.28         |
| SCOP (A7/W55)  | -    | 3.24           | 3.19         | 3.16         |
| η <sub>sh</sub> at W35 (%) av. Climate <sup>1)</sup> | -    | 170            | 170          | 168          |
| η <sub>sh</sub> at W55 (%) av. Climate <sup>1)</sup> | -    | 126            | 125          | 124          |
| Max flow temperature                                 | °C   | 60°C (at A -4) |              |              |
| Max flow temperature at A -20                        | °C   | 45°C           |              |              |
| Operating outdoor temperature limits                 | °C   | -20°C          |              |              |
| Space heating efficiency class HT                    | -    | A++            | A++          | A+           |
| Energy efficiency class HP LT                        | -    | A++            | A++          | A++          |
| Cooling Data   |      |                |              |              |
| Max output at A35/W18                                | kW   | 59.07          | 65.7         | 77.7         |
| EER at A35/W18                                       | -    | 4.07           | 3.67         | 3.35         |
| Max output at A35/W7                                 | kW   | 42.50          | 48.20        | 55.03        |
| EER at A35/W7  | -    | 3.02           | 2.95         | 2.75         |
| Outdoor temperature operating range                  | °C   | Up to 48°C     |              |              |
| Minimum supply temperature                           | °C   | 0°C            |              |              |

<sup>1)</sup> Seasonal space heating energy efficiency.

Whilst it is always our intention to fully assist, it is essential to recognise that all information given by the company in response to an enquiry of any nature is provided in good faith and based upon the information provided with the enquiry. We recommend that advice should always be checked with your installer or contract partner. Consequently, the company cannot be held responsible for any liability relating to the use or repetition of such information or part thereof. In addition, whilst making every reasonable effort to monitor the performance and quality of our supply, installation, and service network, we do not accept responsibility for the workmanship or operation of any third-party company that the company may have promoted either in conversation, e-mail, or other communication. Similarly, the views and opinions expressed in communication with individuals within the company may not reflect that of the business as a whole. You can find this, and additional information on the Bosch commercial website at: [www.bosch-thermotechnology.com/gb/en/commercial-industrial/home](http://www.bosch-thermotechnology.com/gb/en/commercial-industrial/home)



# TECHNICAL DATA SHEET

TECHNICAL DATA SHEET COM115 (02/2023)



**BOSCH**

Invented for life

## ➤ Chassis 2: Other information

| Description   | Unit | Product Models  |              |              |
|---|------|-----------------|--------------|--------------|
|   |      | CS3000AWP 31    | CS3000AWP 36 | CS3000AWP 41 |
| Refrigeration circuit                                     |      |                 |              |              |
| Compressor type   | -    | Rotary Inverter |              |              |
| No. of Compressors/Circuits                               | -    | 2/1             |              |              |
| Refrigerant type  | -    | R32             |              |              |
| Refrigerant charge  | kg   | 14              |              |              |
| CO <sub>2</sub> Equivalent                                | t    | 9.45            |              |              |
| Max. Operating pressure                                   | bar  | 42              |              |              |
| Min. Operating pressure                                   | bar  | 1.4             |              |              |
| Sound output <sup>2)</sup>                                |      |                 |              |              |
| Standard mode (Power/Pressure)                            | dB   | 75 / 58         | 75 / 58      | 80 / 63      |
| Silent mode (Power/Pressure)                              | dB   | 74 / 57         | 74 / 57      | 79 / 62      |
| Super silent mode (Power/Pressure)                        | dB   | 71 / 54         | 71 / 54      | 75 / 58      |
| Electrical supply   |      |                 |              |              |
| Power supply  | -    | 400V/3~/50hz+N  |              |              |
| Maximum current   | A    | 40.5            |              |              |
| Startup current   | A    | 20.25           |              |              |
| Recommended Auto circuit breaker                          | A    | 50              |              |              |
| Performance factor cos ϕ with max output                  | -    | 0.94            |              |              |
| System Information  |      |                 |              |              |
| Flow and Return Connection type                           | -    | Viciaulic       |              |              |
| Flow and Return Connection size                           | Inch | 2"              |              |              |
| Min. Flow rate  | l/s  | 1.8             |              |              |
| Max. Flow rate  | l/s  | 5.0             |              |              |
| Max. Operating water pressure                             | bar  | 6               |              |              |
| Min. System volume for defrost                            | l    | 400             |              |              |
| Min. / Max. Water operating temperature (Cooling/Heating) | °C   | 0°C/60°C        |              |              |
| Product information                                       |      |                 |              |              |
| Width   | mm   | 1060            |              |              |
| Depth   | mm   | 2274            |              |              |
| Height  | mm   | 1480            |              |              |
| Weight  | kg   | 609             |              |              |
| IP Rating   | -    | IP45            |              |              |

## <sup>2)</sup> Sound pressure level measured 1 meter from the outer surface of the unit operating in open field.

Whilst it is always our intention to fully assist, it is essential to recognise that all information given by the company in response to an enquiry of any nature is provided in good faith and based upon the information provided with the enquiry. We recommend that advice should always be checked with your installer or contract partner. Consequently, the company cannot be held responsible for any liability relating to the use or repetition of such information or part thereof. In addition, whilst making every reasonable effort to monitor the performance and quality of our supply, installation, and service network, we do not accept responsibility for the workmanship or operation of any third-party company that the company may have promoted either in conversation, e-mail, or other communication. Similarly, the views and opinions expressed in communication with individuals within the company may not reflect that of the business as a whole. You can find this, and additional information on the Bosch commercial website at: [www.bosch-thermotechnology.com/gb/en/commercial-industrial/home](http://www.bosch-thermotechnology.com/gb/en/commercial-industrial/home)

# TECHNICAL DATA SHEET

TECHNICAL DATA SHEET COM115 (02/2023)

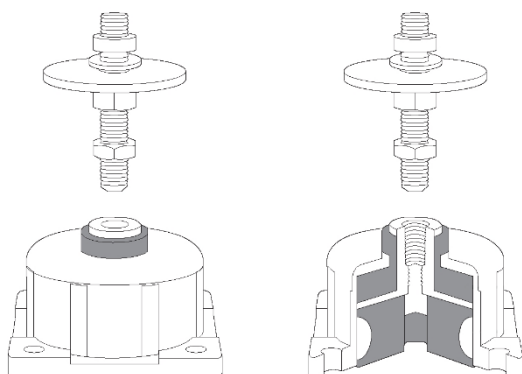


**BOSCH**

Invented for life

## Accessories

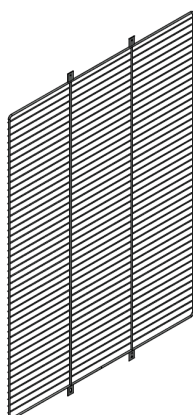
### Anti-Vibration mounts



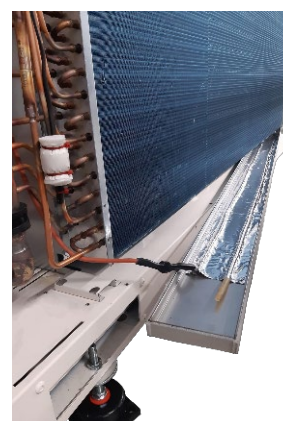
### Dirt trap/Strainer



### Protection Grill



### Drain pan heater



| Product  | Part number   | Product                                  | Part number   |
|--|---------------|--|---------------|
| Anti-Vibration mounts Chassis 1                            | 8-738-214-119 | Protection Grille Chassis 1              | 8-738-214-133 |
|  |               | Protection Grille Chassis 2              | 8-738-214-134 |
| Anti-Vibration mounts Chassis 2<br>(Chassis 1 with Buffer) | 8-738-214-120 | Dirt trap/Strainer Chassis 1             | 8-738-214-116 |
|  |               | Dirt trap/Strainer Chassis 2             | 8-738-214-117 |
| Anti-Vibration mounts Chassis 2<br>with Buffer             | 8-738-214-123 | Condensate drain pan heater<br>Chassis 1 | 8-738-214-139 |
|  |               | Condensate drain pan heater<br>Chassis 2 | 8-738-214-140 |

Whilst it is always our intention to fully assist, it is essential to recognise that all information given by the company in response to an enquiry of any nature is provided in good faith and based upon the information provided with the enquiry. We recommend that advice should always be checked with your installer or contract partner. Consequently, the company cannot be held responsible for any liability relating to the use or repetition of such information or part thereof. In addition, whilst making every reasonable effort to monitor the performance and quality of our supply, installation, and service network, we do not accept responsibility for the workmanship or operation of any third-party company that the company may have promoted either in conversation, e-mail, or other communication. Similarly, the views and opinions expressed in communication with individuals within the company may not reflect that of the business as a whole. You can find this, and additional information on the Bosch commercial website at: [www.bosch-thermotechnology.com/gb/en/commercial-industrial/home](http://www.bosch-thermotechnology.com/gb/en/commercial-industrial/home)