



BOSCH

Flow 8500 Indirect HIU Specifier guide

Next generation now



Specifier
guide



BESA

BUILDING ENGINEERING
SERVICES ASSOCIATION

 **Trustpilot**

Our customers rate us excellent

Flow 8500 Indirect HIU

BESA 2023 test regime registered

Meet the next generation of heat networks: the BESA 2023 tested and registered indirect HIU – the Flow 8500.

The Flow 8500 Indirect HIU is our cutting-edge heat network solution. A system designed to redefine efficiency and sustainability in heating infrastructure. Its innovative technology not only meets the demands of today’s energy landscape, but also anticipates the needs of tomorrow, with a focus on a reliable design and performance.

This HIU ensures optimal heat distribution whilst reducing environmental impact. It is the future of energy efficient, community-centred heating.



Future-proof your project

Decarbonise with ease



Why specify the Flow 8500 Indirect HIU?



BESA Registered
BESA 2023 regime test registered, designed for the most energy efficient heat networks.



Reduced return temp.
Our new precision temperature sensors ensure high performance, accurate control and overall network efficiency.



On Demand DHW
Improved domestic hot water response time whilst maintaining HIU efficiency.



Improved VWART
More energy efficient due to reduced VWART performance.



Reliable design and performance
Built to withstand the demands of future heat networks.



DHW peak performance
Perfect for multiple use, without disturbance to the flow rate, even at peak times.

The Flow 8500 Indirect HIU has been rigorously tested to meet BESA 2023 test regime and standards. This means on demand domestic hot water (DHW) with our improved ‘keep warm’ function due to variable opening valves that adapt to the installation situation.

New precision temperature sensors ensure high performance and accurate control at very low flow rates. Upgraded thermal insulation also helps reduce thermal heat loss and improved VWART performance makes this HIU more efficient.

Why choose Bosch?



Reliable heating
Enjoy peace of mind from a brand you can trust, with BESA registered products.

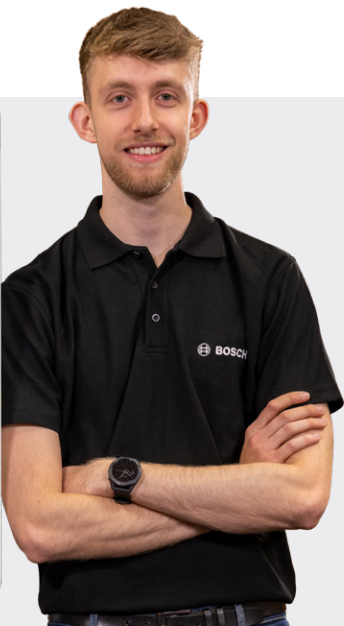
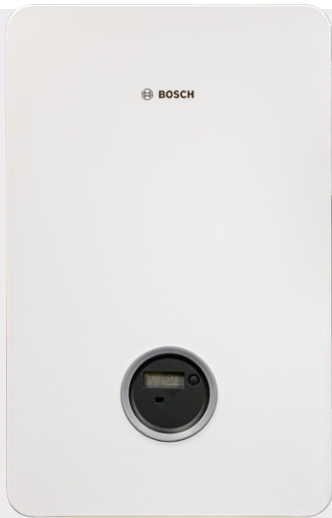


Tried and tested
Our HIU’s are built to last with a proven track record of reliable operation in projects across Europe.



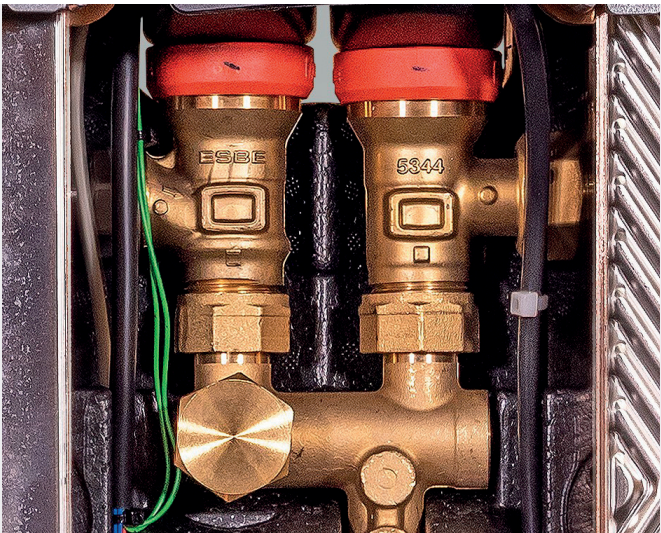
Project support
Our experts will be there every step of the way. From planning, design, installation and technical support.

Installation flexibility



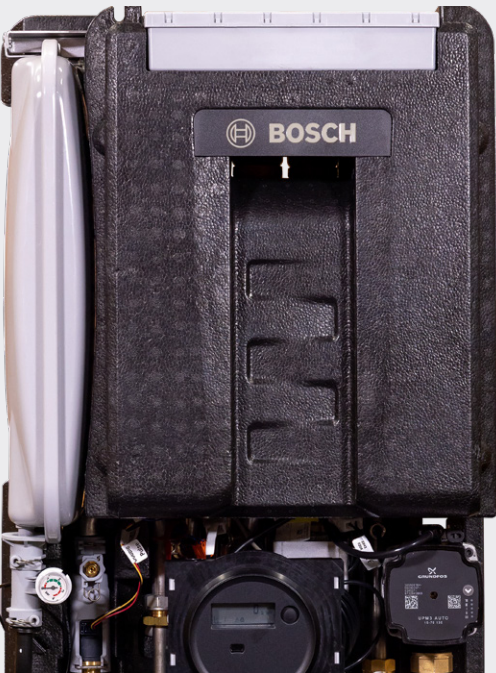
The Flow 8500 is assembled to the highest quality and utilises state-of-the-art manufacturing controls and assurance to ensure peace of mind for customers and residents.

Tom
Production Engineer



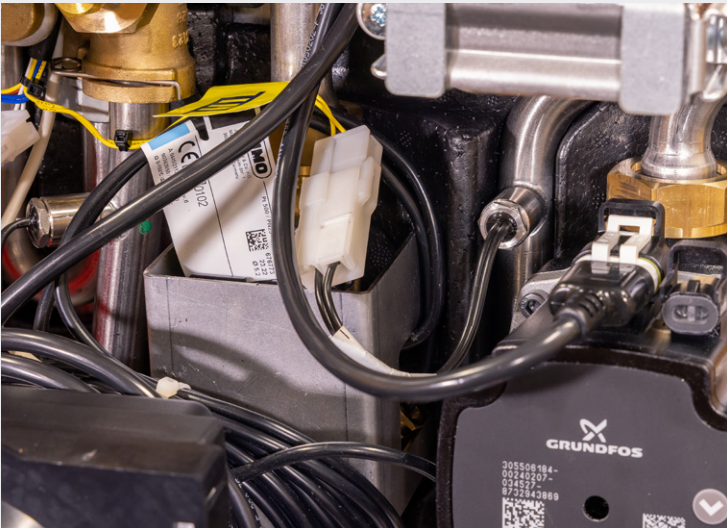
Better valve authority

We've upgraded our valve control to meet the new 0.5kW heating test introduced by the BESA 2023 test regime, to increase efficiency in low temperature heat networks.



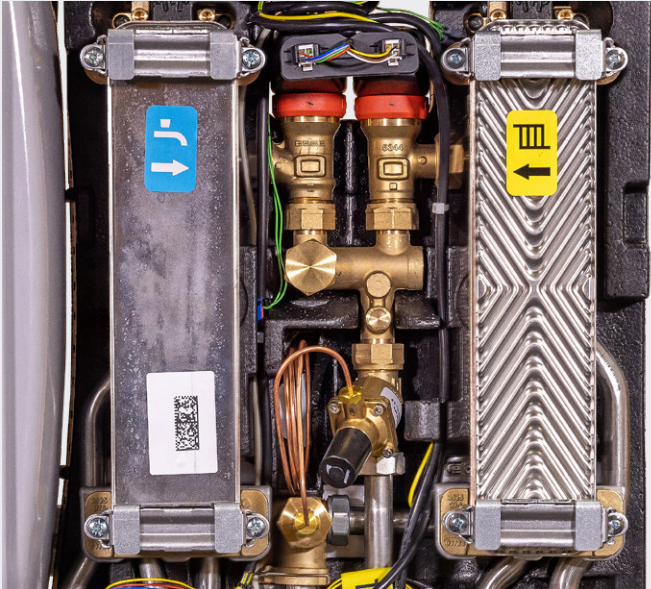
Wet temperature sensors

Enhances control performance that ensures consistent low return temperatures, especially under more demanding low flow conditions.



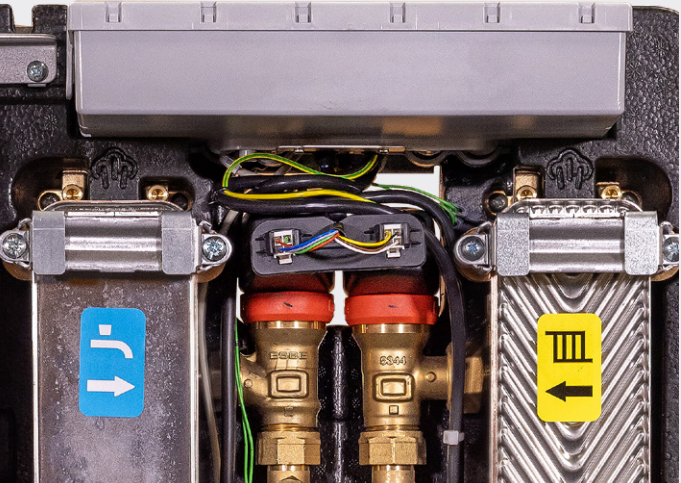
More insulation

Keeping heat losses to a minimum is essential for every component of a heat network that's why we have further improved the level of insulation for key sections of the HIU.



Improved plate heat exchanger

Our high-performance plate heat exchangers are proven to meet many of the best practice requirements under the BESA 2023 Test Regime, ensuring your HIUs are optimised for low temperature heat networks.

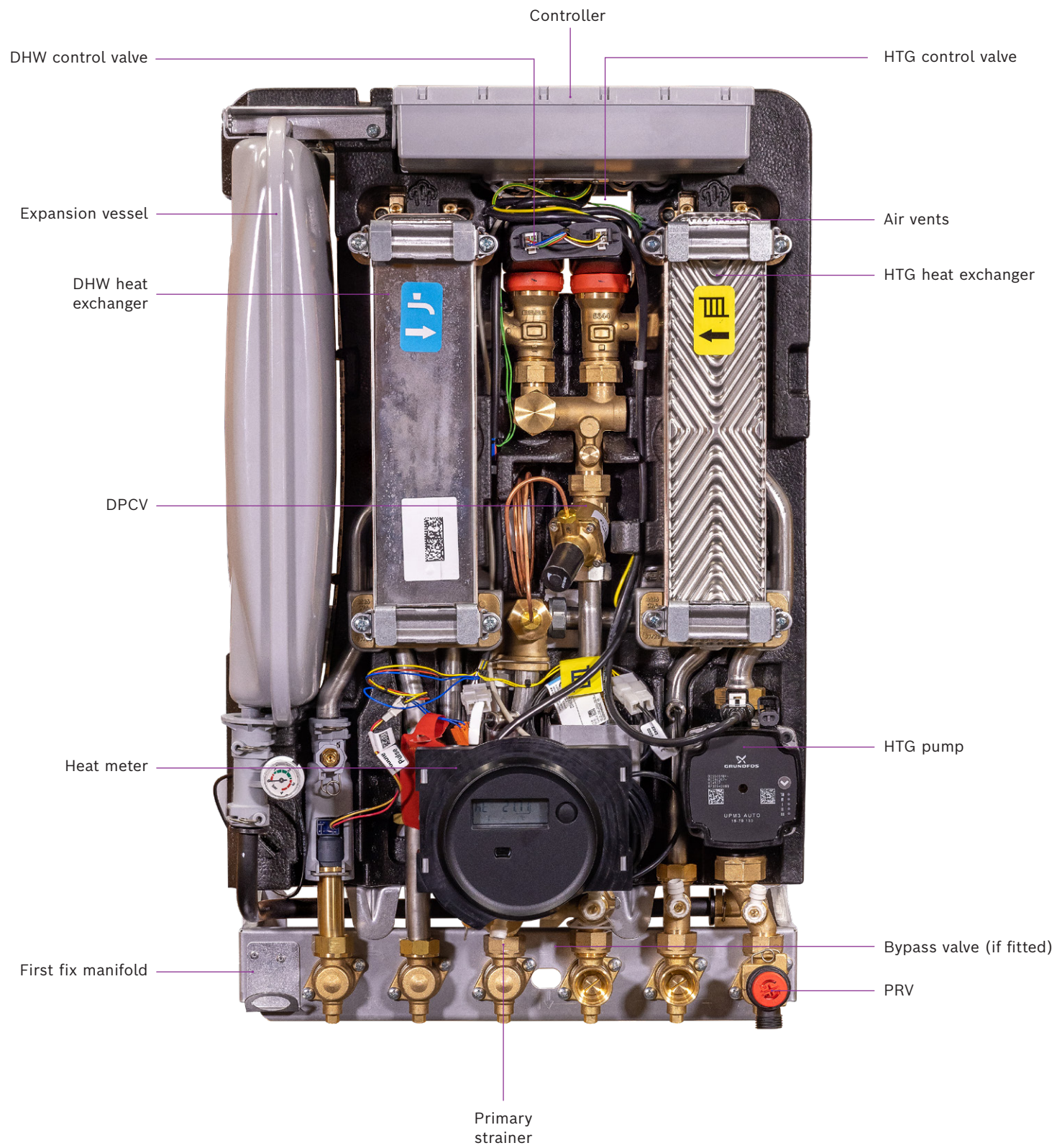


Smart software

Increased flexibility over temperature set points offering improved predictive control, helping you meet the standards required of modern low temperature, high performance heat networks.

Flow 8500 HIU

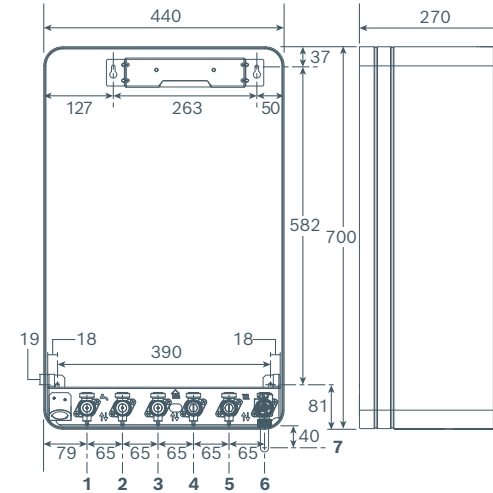
The inside story



Flow 8500 HIU

Dimensions and clearances

Dimensions and hydraulic connections



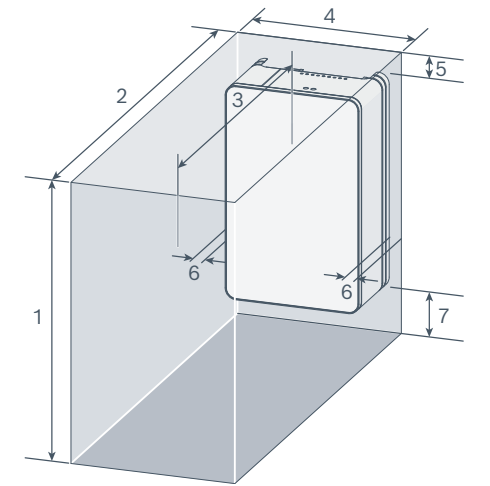
Key	Description	Connection (mm)
1	Cold mains inlet	22
2	Domestic Hot Water outlet	22
3	District heating supply	22
4	District heating return	22
5	Central heating flow	22
6	Central heating return	22
7	Pressure relief valve	15

Weight (Excluding packaging)	26-27kg (model dependent)
------------------------------	---------------------------

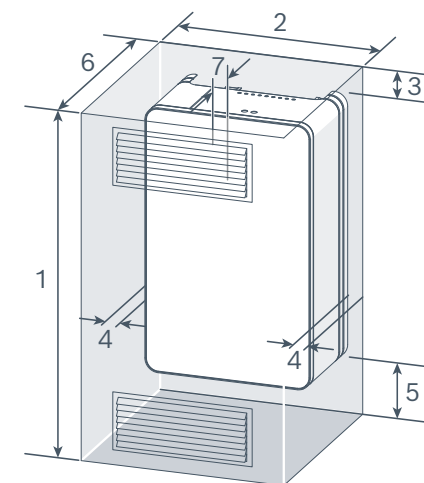
Weight (Including Packaging)	29-30kg (model dependent)
------------------------------	---------------------------

Minimum installation and maintenance clearances

Key	Description	Dimensions (mm)
1	Overall clearance height	930
2	Overall clearance depth	870
3	In front of appliance	600
4	Overall clearance width	450
5	Above the appliance	30
6	Either side of appliance	5
7	Below the appliance	200



Minimum compartment clearances



Key	Description	Dimensions (mm)
1	Compartment height	930
2	Compartment width	450
3	Above the appliance	30
4	Either side of appliance	5
5	Below the appliance	200
6	Compartment depth	290
7	Appliance to removable door	20

Product data







HIU model	Part Number
Flow 8500 40	7 735 600 739
Flow 8500 40 H	7 735 600 740
Flow 8500 50	7 735 600 741
Flow 8500 50 H	7 735 600 742
Flow 8500 60	7 735 600 743
Flow 8500 60 H	7 735 600 744

Flow temperatures

	Flow 40, 50, 60
Maximum flow temperature of primary circuit	90°C
Maximum flow temperature of heating circuit	70°C
Maximum DHW temperature	60°C
Maximum operating pressure	10 bar
Maximum primary differential pressure	4.5 bar

Accessories

Product	Part Number
 Flow 8500 Pre Fix Kit Flat Faced	7 735 600 837
 Flow 8500 Pre Fix Kit Compression	7 735 600 836
 Vertical Plumb Kit Hiu (Compression)	7 733 600 127
 HIU Keyless Filling Link (Compression Fix Pack Only)	7 716 192 610
 Bypass Valve (Summer Bypass)	7 733 600 132
 Flushing Valve (Compression)	7 733 600 133
 Flushing Valve (Flat Face)	7 733 601 142
 Accessory HIU Anti-Theft Fixings	7 733 600 281

Product	Part Number
 Greenstar System Filter Mini 22mm	7 733 600 266
 Greenstar System Filter 22mm	7 733 600 236
 Greenstar Sense II	7 738 111 064
 Greenstar Sense I	7 738 110 054
 Flow 8500 Water Hammer Arrestor	7 735 600 804
 Over temp shut off valve	7 735 600 808

Technical data

Primary Flow Temp (°C)	DHW Flow Rate (l/min)	Primary Flow Rate (l/min)	Primary Return Temp (°C)	Primary Pressure Drop (kPa)	Output (kW)
Flow 8500 60 - DHW Temp 50 °C					
55	9	10	20	25	25
55	12	14	22	47	33
60	9	9	17	17	25
60	12	11	18	30	33
60	15	15	19	49	42
60	18	18	20	70	50
70	9	7	14	11	25
70	12	9	15	18	33
70	15	11	16	28	42
70	18	13	17	40	50
70	21	15	18	53	58
80	9	5	11	6	25
80	12	7	12	11	33
80	15	9	12	18	42
80	18	11	13	26	50
80	21	13	13	36	58
Flow 8500 50 - DHW Temp 50 °C					
55	9	11	22	27	25
55	12	15	23	55	33
60	9	9	17	19	25
60	12	12	18	32	33
60	15	15	20	54	42
60	17	17	21	70	47
70	9	7	14	11	25
70	12	9	15	19	33
70	15	11	15	28	42
70	18	13	16	41	50
70	21	15	17	54	58
80	9	6	13	8	25
80	12	7	13	14	33
80	15	9	14	21	42
80	18	11	14	30	50
80	21	13	15	41	58
Flow 8500 40 - DHW Temp 50 °C					
55	9	13	27	61	25
60	9	9	20	26	25
60	12	13	24	67	33
70	9	7	16	15	25
70	12	9	17	26	33
70	15	11	18	42	42
80	9	6	15	12	25
80	12	8	16	20	33
80	15	10	17	32	42

Dedicated support and expertise

Project team

Our project team are on-hand at every stage, from feasibility to completion:

- ▶ Detailed design support in accordance with CIBSE CP1 (2020)
- ▶ Detailed evaluation of heat source options, feasibility and selection
- ▶ Design meetings and site visits
- ▶ Support with installation and commissioning
- ▶ After-sales and nationwide service engineers



Contact us to book your free, no obligation project consultation and site visit.

Website: bosch-industrial.co.uk/directHIU

Phone: **03330 608 456**

Email: commercial.industrial@uk.bosch.com

Looking for a Direct HIU variant?

Our Flow 8000 Direct HIU is a perfect on-demand solution for heat networks where optimisation for low temperatures is required.



Complete heat network solutions

Plant room heating

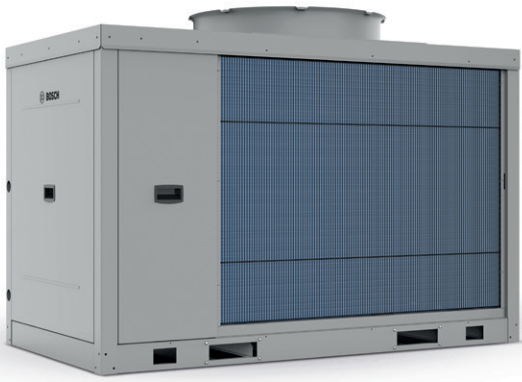
From the property to the plant room, we provide the complete heating solutions for your next heat network project.



Commercial boilers

Our commercial boilers are quick and easy to install with controls for reliable monitoring.

Wall-hung or floor-standing, our boilers come in a wide range of outputs from 50kW to 1MW and can be cascaded up to 8MW.



Commercial heat pumps

Available in outputs ranging from 16kW to 59kW (A-7/W35), our CS3000 commercial heat pump can be cascaded up to 16 units to achieve an output of up to 944kW (A-7/W35).

With the ability to be used for heating, domestic hot water and cooling, it is a versatile heat pump that can be used as standalone or as part of a hybrid system.



Industrial boilers

We provide a range of large peak load boilers to suit the needs of your heat network, including:

- Electric boilers, up to 10MW
- Gas and light fuel oil boilers up to 38MW

Get in touch

Sales

Tel: 0330 123 9669

Email: commercial.industrial@uk.bosch.com

Technical Helpline (Pre & Post Sales)

Tel: 0330 123 3366

Email: technical-advice@uk.bosch.com

Spare Parts

Tel: 0330 123 9779






Email: spares.mailbox@uk.bosch.com

Controls Helpline

Tel: 0330 123 3641

Share

We would love to see your installations!

-  Worcester Bosch Professional
-  @WorcesterBoschProfessional
-  @WorcesterBosch
-  Worcester Bosch
-  Worcester Bosch Group

Training

Install with confidence

Learn everything you need to know about our Heat Interface Units (HIU). We specifically tailor all our product training courses to meet your needs. Our hands-on course is ideal for those who want to specify and/or install HIU as part of a heat network/district heating system.

Supporting you

Our courses are here to support your installation from beginning to end. The Heat Interface Unit (HIU) training course covers:

- ▶ The fundamentals of a heat network
- ▶ Connections to the district heating, cold water, hot water and the space heating
- ▶ Operation, servicing and maintenance
- ▶ Fault finding including potential network issues
- ▶ We also provide CIBSE approved CPDs, helping you keep up to date with industry knowledge and trends.



Training

Tel: 0330 123 0166

Email: training@uk.bosch.com

Worcester Bosch

Cotswold Way
Warndon
Worcester
WR4 9SW

worcester-bosch.co.uk

Calls to and from Bosch Thermotechnology Ltd may be recorded for training and quality assurance purposes. Worcester Bosch is a brand name of Bosch Thermotechnology Ltd. This brochure is accurate at the date of printing, but may be superseded and should be disregarded if specification and/or appearances are changed in the interest of continued improvement. The statutory rights of the consumer are not affected.

